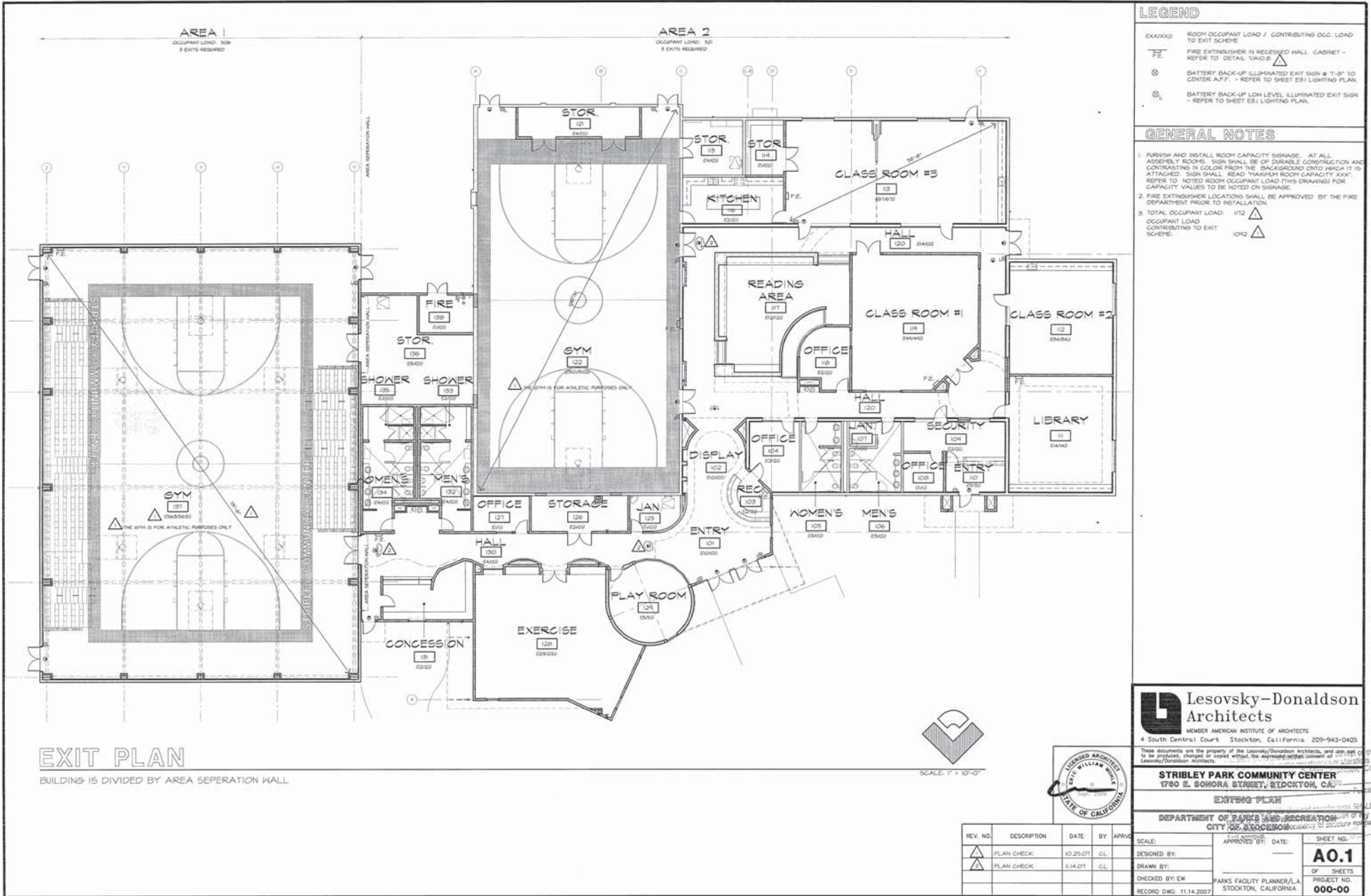


Stribley Community Center



LEGEND

(XXXXXX) ROOM OCCUPANT LOAD / CONTRIBUTING OCC. LOAD TO EXIT SCHEME

FE FIRE EXTINGUISHER IN RECESSIVE WALL CABINET - REFER TO DETAIL 1A10.2

⊗ BATTERY BACK-UP ILLUMINATED EXIT SIGN @ T-8" TO CENTER A.F.F. - REFER TO SHEET E3J LIGHTING PLAN

⊗ BATTERY BACK-UP LOW LEVEL ILLUMINATED EXIT SIGN - REFER TO SHEET E3J LIGHTING PLAN

GENERAL NOTES

- FURNISH AND INSTALL ROOM CAPACITY SIGNAGE. AT ALL ASSEMBLY ROOMS, SIGN SHALL BE OF DURABLE CONSTRUCTION AND CONTRASTING IN COLOR FROM THE BACKGROUND ONTO WHICH IT IS ATTACHED. SIGN SHALL READ "MAXIMUM ROOM CAPACITY XXXX". REFER TO NOTED ROOM OCCUPANT LOAD THIS DRAWING FOR CAPACITY VALUES TO BE NOTED ON SIGNAGE.
- FIRE EXTINGUISHER LOCATIONS SHALL BE APPROVED BY THE FIRE DEPARTMENT PRIOR TO INSTALLATION.

TOTAL OCCUPANT LOAD: 1172

OCCUPANT LOAD CONTRIBUTING TO EXIT SCHEME: 1042

EXIT PLAN
BUILDING IS DIVIDED BY AREA SEPERATION WALL



Lesovsky-Donaldson Architects
MEMBER AMERICAN INSTITUTE OF ARCHITECTS
4 South Central Court Stockton, California 95210-9430-0425



These documents are the property of the Lesovsky/Donaldson Architects, and any part of them to be produced, changed or copied without the expressed written consent of Lesovsky/Donaldson Architects.

STRIBLEY PARK COMMUNITY CENTER
1780 E. BONDURA STREET, STOCKTON, CA 95210

ENTERING PLAN

DEPARTMENT OF PARKS AND RECREATION
CITY OF STOCKTON

REV. NO.	DESCRIPTION	DATE	BY	APPROVED BY:	SCALE:	APPROVED BY: DATE:
1	PLAN CHECK	10.25.07	CL			
2	PLAN CHECK	11.14.07	CL			

SHEET NO. **A0.1**
OF SHEETS
PROJECT NO. **000-00**